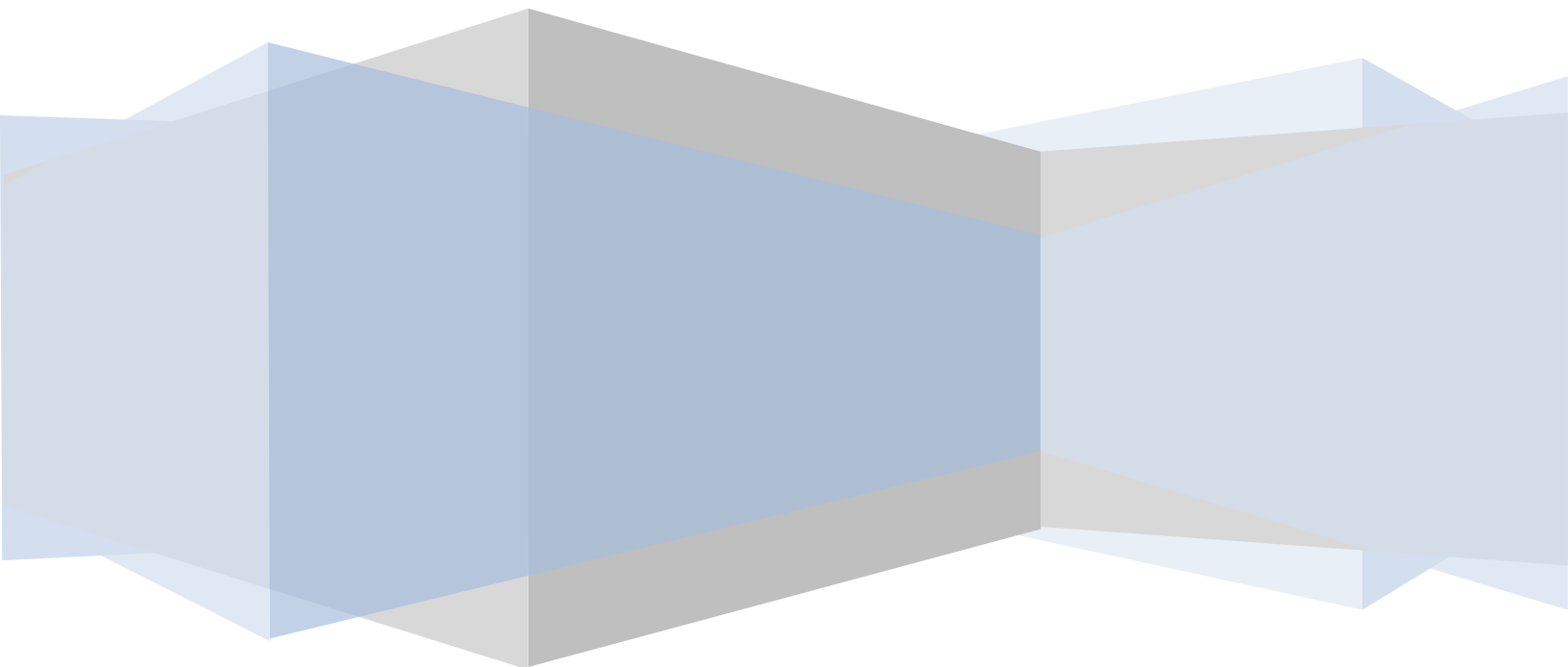


WORDEN

What's New in Blocks Trader version 3.1

Quick Start Guide



5/5/2008 4:33 PM

Worden Brothers, Inc.
4905 Pine Cone Drive
Durham, NC 27707
1-800-776-4940 sales
1-919-408-0542 support
www.Worden.com

The Blocks Company, LLC
5370 NW 35th Terrace
Building B, Suite 113
Fort Lauderdale, FL 33309
1-954-489-3001 corporate contact
www.Blocks.com

Copyright 2008 by Worden Brothers, Inc.

The Blocks technology is licensed to Worden by The Blocks Company, LLC. Patents are pending.

All rights reserved. BackScanner is a registered trademark of Worden Brothers, Inc. Trade Sliders™, PaintBrush™ and QuickTickets™ are trademarks of Worden Brothers, Inc.

TD AMERITRADE, Inc. and Worden Brothers, Inc. are separate, unaffiliated companies and are not responsible for each other's services and products. Brokerage services provided exclusively by TD AMERITRADE, Inc., member SIPC

Table of Contents

Welcome to Blocks Trader Version 3.1	5
Version 3.0 users MUST read	5
Conventions used in this document	5
What does it mean to drag something?	5
What is the ribbon?	5
New Condition Palette	6
Create a new condition any of the following ways:.....	6
Delete an existing condition from the palette.....	6
Use Conditions in the Palette to Scan, Sort, Paint, etc.	7
To scan a watchlist for stocks passing a condition.....	7
To paint conditional colors onto an indicator/line	7
To historically plot how many times a condition is true for a list of stocks.....	7
To plot a condition on a chart.....	8
New Condition Columns & Sorts.....	9
"# Bars Since True"	9
"% Bars True", "Latest Date True", and "True in Row"	9
New Password & Blog Options for Shared Items.....	10
Share a chart by clicking the share button on the chart toolbar.	10
Share a layout by clicking the share button on the Quick Access toolbar on the top of Blocks.....	10
Share a watchlist by clicking the share button on a personal watchlist.	10
To view the shared library	11
New Combo Condition Editor	12
Drag as many conditions into the editor as you would like.....	12
New Sequence Editor.....	13
Example of "Drifting Down Pop" Sequence	13
Creating a new sequence.....	14
Drag as many conditions into the editor as you would like.....	14
Example of "Stochastics Double Bottom" Sequence	14
Example of "Analyst Upgrade Reaction" Sequence	15
New Improved Real-Time Servers.....	16
New Improved Integration with Three Different Brokers	17
To view your current positions	17
To view your positions and pending orders on your charts	18

To cancel a pending order from your chart	18
To modify a pending order from your chart	18
To close out a position	19
To place a trade from your chart	19
Trade through multiple brokers simultaneously	20
To show/hide trade sliders on your chart.....	20
To create your own pre-configured trade tickets.....	21
New Integration with Interactive Brokers' Trader Workstation.....	22
One time setup between Blocks and IB's Trader Workstation (TWS)	22
To connect Blocks to TWS.....	23
New Window Layout Options	24
To reorder tabbed windows	24
New Auto-Format for Block Diagrams	25
New BackScanner® Now Available in Pre-Release.....	26
Here are some sneak-peek screenshots from the new BackScanner.....	26

Welcome to Blocks Trader Version 3.1

This new release notches up the stability of the Blocks platform and should streamline your workflow. Our goal is to make each version snappier and more intuitive while increasing the depth of capabilities. This particular release is loaded with lots of goodies and fixes hundreds of bugs as reported by users.

Version 3.0 users MUST read

If you are a version 3.0 user, you must read the first section of this guide about the Condition Palette. This is a fundamental change to how to manage your conditions in a layout. It is recommended that you read about all changes to the software, but please read the sections about conditions.

Conventions used in this document

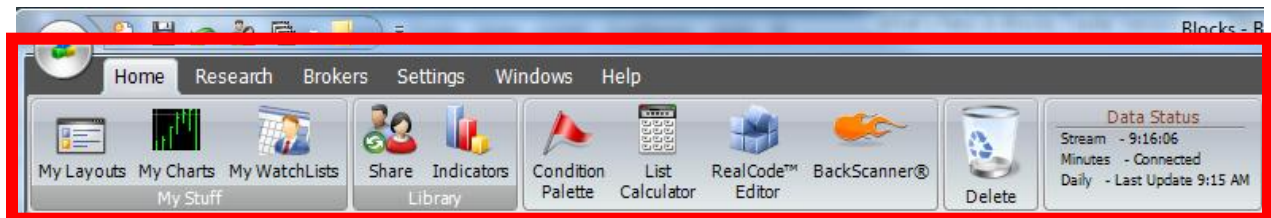
Here are a couple terms that you should understand before reading.

What does it mean to drag something?

Many operations in Blocks can be accomplished by dragging items around the screen and onto other items. To accomplish a drag, you left click on an item and hold the mouse button down. Move your mouse to move the item around the screen while keeping your mouse button depressed. Once you have the item hovering over the spot you wish to release it, let go of the left mouse button.

What is the ribbon?

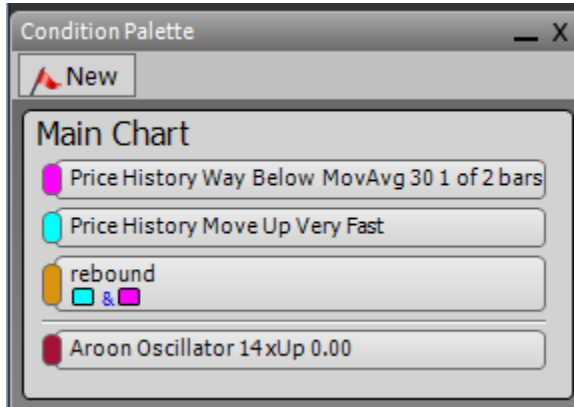
This guide frequently refers to the **ribbon** in Blocks. The **ribbon** consists of all the tabs and buttons at the top of the program.



New Condition Palette



Press the button on the ribbon to show/hide the condition palette. This is where you create new conditions and keep them organized. Drag conditions from the palette to perform actions such as scanning, sorting, painting and counting. The palette also acts as a nice color legend to see where and how your conditions are being used within your layout.



IMPORTANT: In version 3.0 of Blocks Trader, conditions were automatically plotted on your chart. In version 3.1, they no longer display on your chart by default. Instead, they display in the condition palette. If you wish to display a condition on your chart, you can drag it from the condition palette to your chart.

NOTE: Conditions are still saved and stored as part of a chart. When you open a chart, its conditions automatically load into the palette.

Create a new condition any of the following ways:

- 1) Drag an indicator/line into the condition palette
- 2) Drag an indicator/line on top of another to create a comparison indicator
- 3) Click the RealCode Editor™ button to write your own condition in Visual Basic.net
- 4) Click the "New" button in the condition palette



In all cases the new condition will appear in your palette and be ready to use for a variety of purposes including scans, sorts, paintbrushes, plots, backtest rules, and counts. You can also combine conditions to build more complex conditions. This is explained later.

Delete an existing condition from the palette



Drag the condition from the palette to the Delete garbage can button on the ribbon.

IMPORTANT: When deleting a condition from the palette, you delete ALL of its uses throughout the entire layout. This includes its use in other conditions, scans, sorts, paintbrushes, plots, BackScans®, etc. You will be warned and shown a list of all occurrences to confirm.

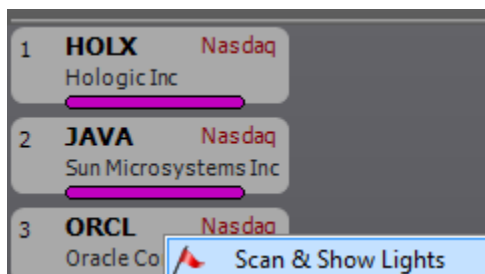
NOTE: In version 3.0, you deleted a condition from your layout by dragging its plot to the garbage can. In version 3.1, this operation would only remove the plot. The condition would still exist in the palette. The only way to remove an entire condition in version 3.1 is to drag it from the palette to the garbage can.

Use Conditions in the Palette to Scan, Sort, Paint, etc.

The condition palette is a great starting point from which to build your sorts, scans and paintbrushes. Operations can be performed as follows:

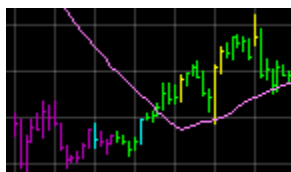
To scan a watchlist for stocks passing a condition

Drag a condition from the palette to a watchlist and choose **Scan & Show Lights**. When a stock (or item) passes the condition, it will light up. This works with end-of-day data or streaming real-time data for the entire watchlist.

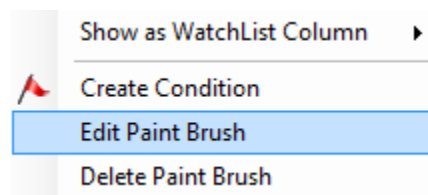


To paint conditional colors onto an indicator/line

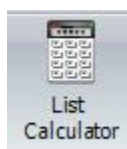
Drag a condition from the palette to the price history or an indicator on your chart. Any time the condition is true, the bar will be **paintbrushed™** with the color of the condition.



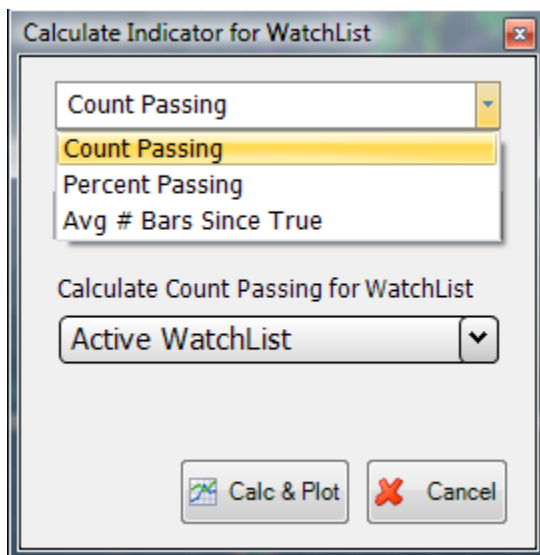
To edit the paintbrush of a plot, right click on the plot and choose *Edit Paintbrush*.



To historically plot how many times a condition is true for a list of stocks



Drag a condition from the palette to the **List Calculator** button on the ribbon. A dialog pops up which allows you to select the type of list calculation and the watchlist for which to calculate. Choose the watchlist and whether you want to plot the raw count or percentage passing.



The condition will be calculated and tested for every bar of every stock in the selected watchlist. Then the “count” will be plotted as an indicator on the chart. This is a great way to create your own market timing indicators and to see how often a condition is true in the past.

Note the *Avg # Bars Since True* is a new type of list calculation for version 3.1. It tracks the average bars since passing for an entire list of stocks. This is a little hard to comprehend at first, but will be demonstrated soon in upcoming videos.

The indicator below was created using the List Calculator. It counts how many of the Nasdaq 100 stocks are passing the "Rebound" condition every hour. The indicator works pretty well for timing short term bottoms in the Q's and will be featured in an upcoming video at www.Blocks.com.



To plot a condition on a chart

Drag a condition from the palette to the blank area of the chart. It will plot on the bottom of a pane as hashes for each bar that is true. Note that it will only draw on the pane that includes the data from which it was created. This is how version 3.0 displayed conditions by default.



New Condition Columns & Sorts

This is one of the coolest and most useful new features in version 3.1. Sometimes you want to find stocks which recently passed a condition – such as last bar or ten bars ago. Or you may only want to see stocks which passed a condition five bars in a row, or five out of the last ten bars.

Bars Since True
Latest Date True
Bars True In A Row
% Bars True In Period

Drag a condition from the palette to a watchlist and choose any of the four conditional column choices. The example below shows *# Bars Since True* selected. You can also display the last date a condition was true, the # of bars that the condition has been true in a row or the percentage of time the condition has passed for a period of time.

“# Bars Since True”

1	JAVA	Nasdaq	Sun Microsystem...	0
2	HOLX	Nasdaq	Hologic Inc	0
3	GRMN	Nasdaq	Garmin Ltd	1
4	UAUA	Nasdaq	UAL Corp	1
5	SBUX	Nasdaq	Starbucks Corpo...	3
6	HANS	Nasdaq	Hansen Natural...	5
7	APOL	Nasdaq	Apollo Group Inc...	21
8	NIHD	Nasdaq	NII Holdings Inc	29

After dragging the condition into a watchlist and selecting the column type, you can click the column header to sort and see the stocks which most recently were true at the top of the list.

In this example, the stocks on the top most recently passed the purple condition. JAVA is passing right now. GRMN passed one bar ago. SBUX passed 3 bars ago. APOL passed 21 bars ago.

“% Bars True”, “Latest Date True”, and “True in Row”

The watchlist below shows a column for *% Bars True in Period* and *Latest Date True* and *True in Row*. All three are based on a “new high” condition. The first column shows the percentage of times each stock made a new high in the last 200 bars. The second column shows the last date it made a new high. The third column shows how many new highs the stock has made in a row. These columns can be created for any of your custom conditions. All columns can be sorted by clicking on the column headers.

1	BIDU	Nasdaq	Baidu.com Inc	18%	4/29/08	0
2	AAPL	Nasdaq	Apple Inc	18%	5/2/08	1
3	RIMM	Nasdaq	Research In Motion...	17%	5/2/08	2
4	ESRX	Nasdaq	Express Scripts Inc	17%	4/25/08	0
5	GOOG	Nasdaq	Google	17%	5/1/08	0
6	CELG	Nasdaq	Celgene Corp	16%	4/2/08	0

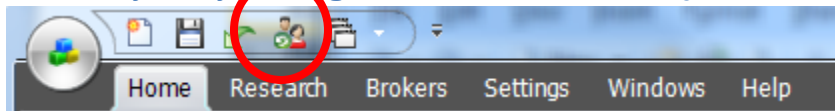
New Password & Blog Options for Shared Items

When you share a chart, layout, or watchlist, you can put a password on it to control who is able to open and use it. You can also include a web address if you'd like to post a blog or write-up about your shared item. You are welcome to include your own website as long as it has content in the spirit of Blocks. Worden reserves the right to remove a web address if it does not feel it is to the benefit of Blocks users.

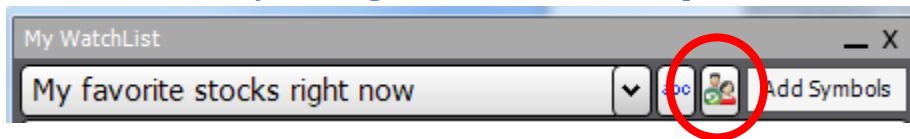
Share a chart by clicking the share button on the chart toolbar.



Share a layout by clicking the share button on the Quick Access toolbar on the top of Blocks.

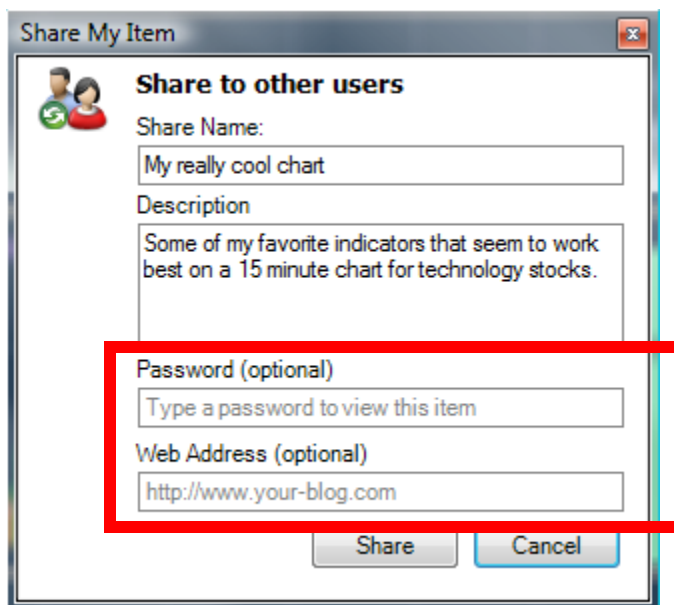


Share a watchlist by clicking the share button on a personal watchlist.



The share dialog will appear with two new optional fields.


One field is to password protect your item. The other field is to provide a web address.



To view the shared library



Click the Share button on the main ribbon to see all the shared items from other users and from Worden. Notice the item below with a lock is password protected.

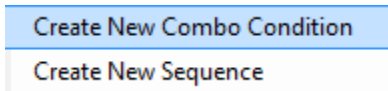
Shared Items				
Search				
Layouts Charts WatchLists My Shared Items				
Author	Name	Date	Views	
mashner	TRec1-test	5/1/2008 9:4...	16	
 Kuf	Date Extender	5/1/2008 4:0...	18	
StockGuy	Pivot Points f...	5/1/2008 3:3...	15	
Craig_S	Chicago Red ...	4/30/2008 4:...	55	
Craig_S	Gappers in C...	4/30/2008 4:...	30	

If the shared item has a web link available, it will show up under the preview as “Click here to view attached web page”. Hover your mouse over the link to see the URL.



New Combo Condition Editor

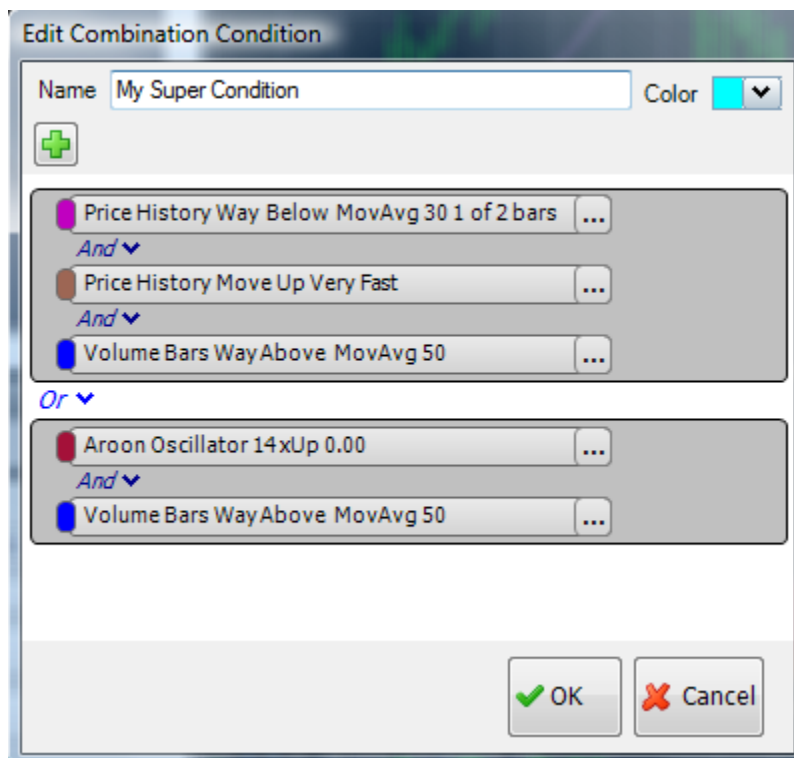
You can combine multiple conditions together to make one new condition. Simply drag a condition in the palette on top of another condition and select *Create New Combo Condition*.



Drag as many conditions into the editor as you would like

The new combo condition editor will pop up. You can drag more conditions from the palette into the combo editor. Click on the **And/Or** pulldowns to select operations. You can drag conditions around within the editor to rearrange them. It is important that you name your combo condition well.

Remember that it will become just like all your other conditions that can be used to scan, sort, paint, etc. You can even use a combo condition inside of another combo condition or sequence.



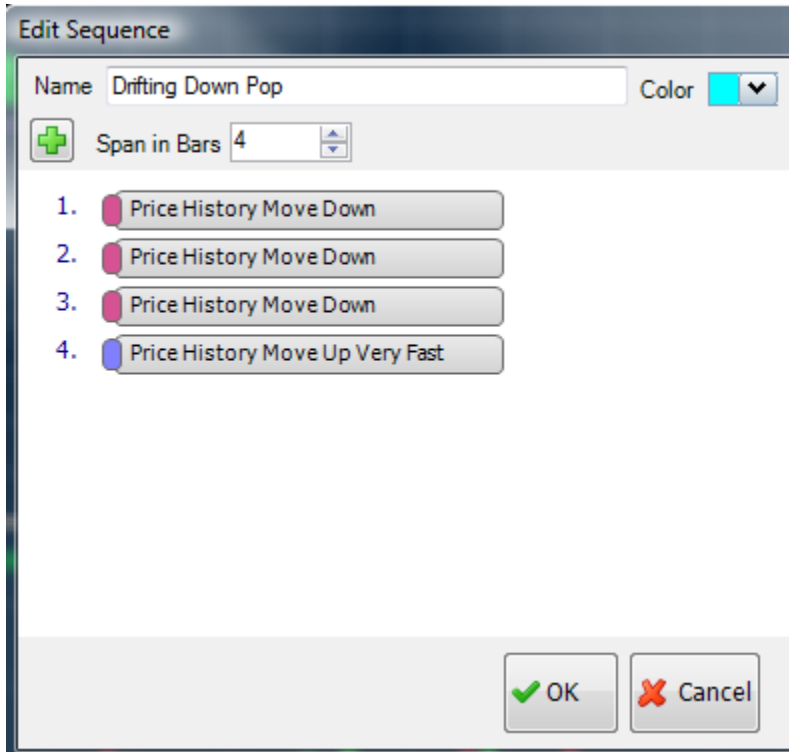
New Sequence Editor

A sequence is a set of multiple conditions which must occur in a specific order over a span of time. They are actually very simple once you try them – and uniquely powerful.

One easy way to think of a sequence is as a timeline of events.

Example of “Drifting Down Pop” Sequence

Let’s start with a super simple example. This sequence is made up of four conditions. The first three say that price must be going down. The fourth says price must be going up very fast. All four of these events must take place within a span of 4 bars.

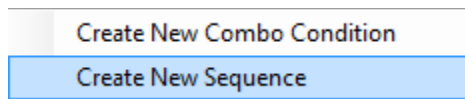


The chart below shows the pattern that the above sequence describes. Notice how there are three down bars in a row prior to the very large up move.



Creating a new sequence

To create a new sequence, drag a condition in the palette on top of another condition in the palette. Choose *Create New Sequence* from the pop-up menu.



Drag as many conditions into the editor as you would like

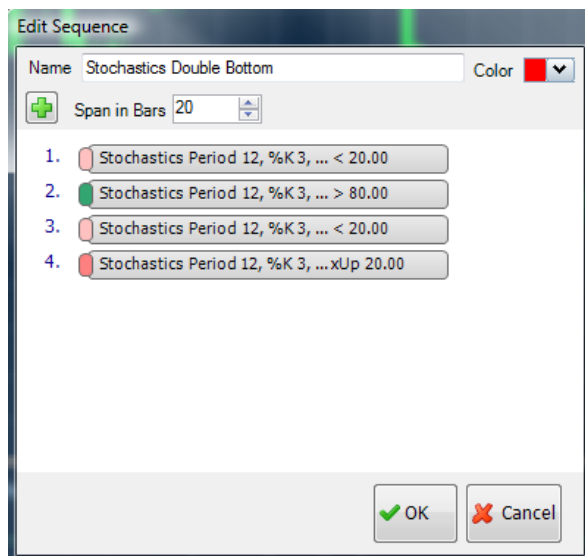
The new sequence editor will pop up. You can drag more conditions from the palette into the sequence editor. You can drag conditions around within the editor to rearrange the order in which they must occur. It is important that you name your sequence. Remember that it will become just like all your other conditions that can be used to scan, sort, paint, etc. You can even use a sequence inside of another combo condition or sequence.

Example of “Stochastics Double Bottom” Sequence

These four events must take place with a span of 20 bars.

- 1) Stochastics is less than 20
- 2) Stochastics pops to over 80
- 3) Stochastics drops back under 20
- 4) Stochastics crosses up through 20

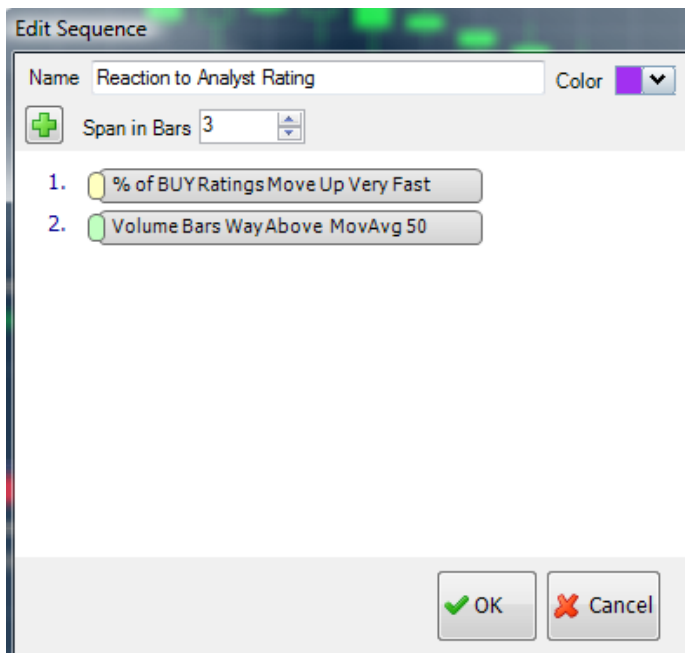
This is a very simple way to describe a “W” bottom in stochastics. The “W” can span any length of time as long as it is less than 20 bars. You can play with the span parameter to see how the patterns change.



Example of “Analyst Upgrade Reaction” Sequence

Both of the previous examples used conditions based off of the same indicator. The first sequence was based on price. The second sequence was based on stochastics. You can mix all types of conditions in a sequence. Just remember they always must occur in sequential order.

Here’s an example that looks for a big move in analyst buy ratings followed by a sharp move in volume. The idea is to find stocks in which the market reacts strongly to the change in rating. The sky is the limit with sequences. You can create a sequence for any pattern you can visualize.

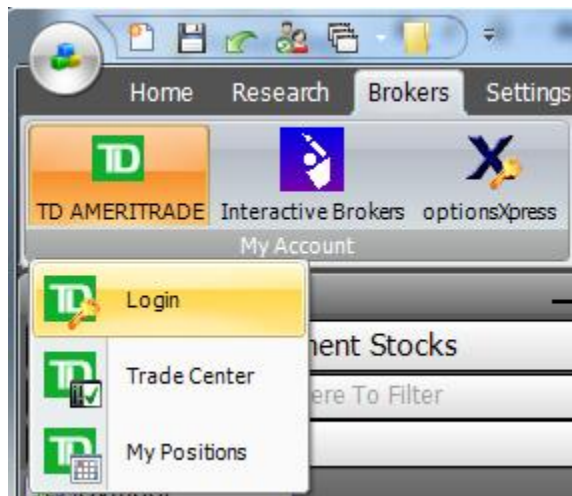


New Improved Real-Time Servers

Some users are reporting that their real-time connection intermittently drops during the day. The new servers have corrected the problem for a small group of test users. Hopefully, the issue will be corrected for all.

Keep in mind that Blocks data servers are the first (and only) to deliver every tick for over 8,000 stocks and indexes through a standard DSL line or cable modem. We are pushing the envelope, but this is what makes it possible for you to scan and sort entire watchlists in real time – without paying hundreds or thousands of dollars per month.

New Improved Integration with Three Different Brokers



If you have an account with TD AMERITRADE, Interactive Brokers, or optionsXpress, you can monitor your positions, monitor your pending orders and place trades from inside Blocks Trader.

This process is seamless and completely automatic once you log in.

To log in to your broker from within Blocks, select the Broker tab and your broker's button on the ribbon. Then select Login.

All of your current positions and pending orders are now available to watch inside of Blocks. Even if you placed your trades from your broker's software or website, they will STILL show up inside of Blocks.

To view your current positions

Select *My Positions* to bring up a watchlist of your current positions. Your average entry prices, # of shares owned and profit/loss are automatically displayed in the watchlist and updated in real-time (if you subscribe to RT service). You can click on any column header to sort your positions. You can drag data and conditions into your position watchlist the same exact way any other watchlist works in Blocks.

▲ Symbol	Net	Sh	Entry...								
1 AAP NYSE Advance Auto Parts Inc	\$8.50	5	\$34.26	2 AAPL Nasdaq Apple Inc	\$252.15	5	\$130.51	3 ADSK Nasdaq Autodesk Inc	\$59.10	10	\$33.51
4 APOL Nasdaq Apollo Group Inc Cl A	\$27.50	10	\$50.87	5 CCU NYSE Clear Channel Comm Inc	\$12.61	10	\$30.01	6 CLX NYSE Clorox Co	-\$3.70	10	\$57.31
7 CMCSA Nasdaq Comcast Corp Cl A	\$6.34	2	\$18.80	8 COLM Nasdaq Columbia Sportswear Co	\$1.24	2	\$41.70	9 COV NYSE Covidien Ltd	\$12.60	5	\$44.86
10 CPWR Nasdaq Compuware Corp	\$2.80	10	\$7.65	11 DSX NYSE Diana Shipping Inc	\$48.30	5	\$22.41	12 EK NYSE Eastman Kodak Co	-\$16.40	10	\$18.51
13 GOOG Nasdaq Google	\$317.90	5	\$517.71	14 HOKU Nasdaq Hoku Scientific Inc	-\$7.69	10	\$8.87	15 IBM NYSE International Business...	\$32.96	2	\$106.70
16 MET NYSE Metlife Inc	\$27.31	10	\$59.44	17 MRB Amex Metallica Resources Gr...	\$3.25	5	\$5.80	18 MSFT Nasdaq Microsoft Corp	\$3.76	2	\$27.36
19 PFG NYSE Principal Financial Group	\$33.21	10	\$54.60	20 PNM NYSE Pnm Resources Inc	\$6.91	10	\$14.30	21 PTEN Nasdaq Patterson-Uti Energy Inc	\$47.55	5	\$19.99
22 RAS NYSE Rait Financial Trust	\$1.81	10	\$7.55	23 RL NYSE Polo Ralph Lauren Corp	\$54.40	10	\$57.28	24 RPM NYSE Rpm International	\$16.20	5	\$19.35
25 SIRI Nasdaq Sirius Satellite Radio	-\$0.88	4	\$2.92	26 SSP NYSE E.W. Scripps Company	-\$1.65	5	\$46.20				

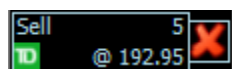
To view your positions and pending orders on your charts


Simply jump to the stock by pressing <J> or clicking on the item in the watchlist. If you are logged into the broker, the current trade information and pending orders will automatically be displayed on your chart. Take a look at the **trade slider** area of Apple's chart below.



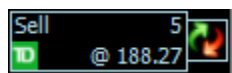
It has a trade slider which shows a position of 5 shares at \$130.51. The open position slider displays an unrealized gain of \$252.15. A different trade slider shows a pending order to sell 5 shares of Apple at \$192.95. The green bar extending up from the open position slider graphically displays the current unrealized gain of the trade.


To cancel a pending order from your chart



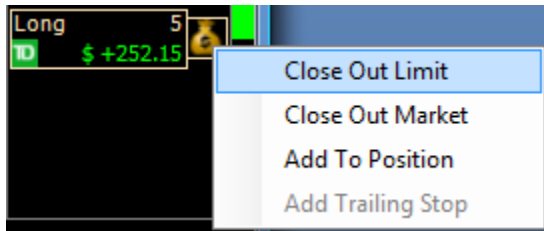
Click the  cancel button and press okay to confirm.

To modify a pending order from your chart



Slide the pending order to your new desired limit price and click the  modify button. A trade ticket will open to confirm your order.


To close out a position



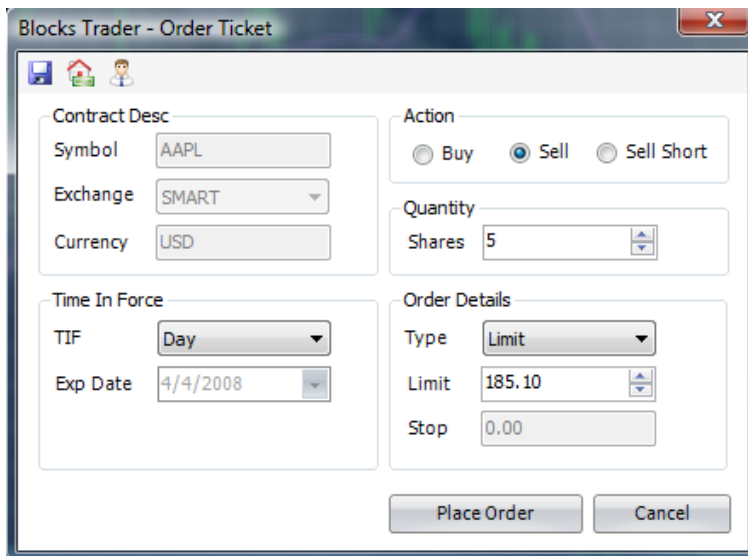
Click on the moneybag of an existing position and select the action you would like to perform.

If you select *Close Out Limit*, a **trade slider™** will appear to close out the current position.



Drag the **trade slider** with your mouse to the desired price and click the  trade button. Notice how

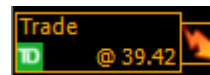
the estimated profit or loss for the trade is updated as you move the trade slider. When you click the trade button, a ticket will open to edit and confirm your order.




To place a trade from your chart

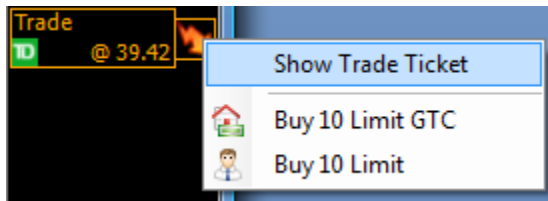


Click anywhere in the **Trade Slider** area to the right of the chart scale and a new trade slider will appear.



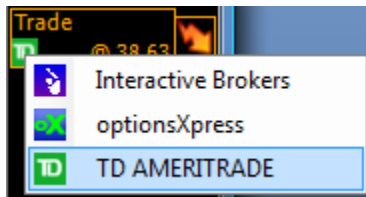
Drag the slider up or down to your desired limit price.

Click on the  trade button and select *Show Trade Ticket*. The other two choices are QuickTickets™ which can be created by you as default order tickets ... more on that below.



Trade through multiple brokers simultaneously

If you are logged into more than one broker and would like to change which broker to place the trade through, click on the broker logo and select the new broker.



The chart below show what the trade slider section will look like with open positions from multiple brokers. There is a long position through Interactive Brokers for 10 shares that is +\$21.40. There is also a long position through TD AMERITRADE of 5 shares that is +\$48.30.



To show/hide trade sliders on your chart

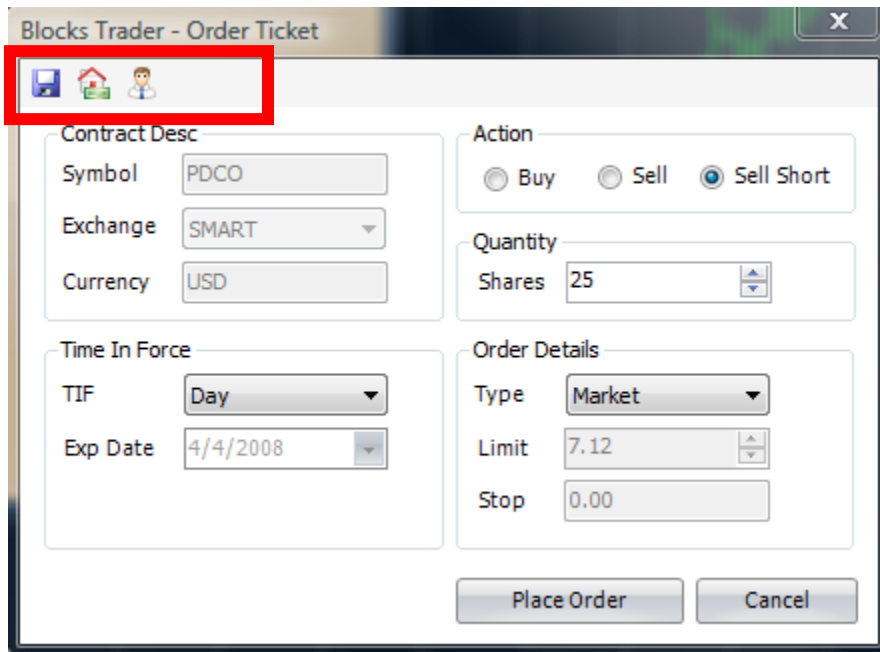



Click the trade button on the chart toolbar to show or hide the trade slider section of the chart. When it is showing, it will automatically display open positions for ALL brokers you are logged into. The one click toggle makes it convenient to show/hide the trade sliders so you can free up more room for your chart when you don't want to see them.

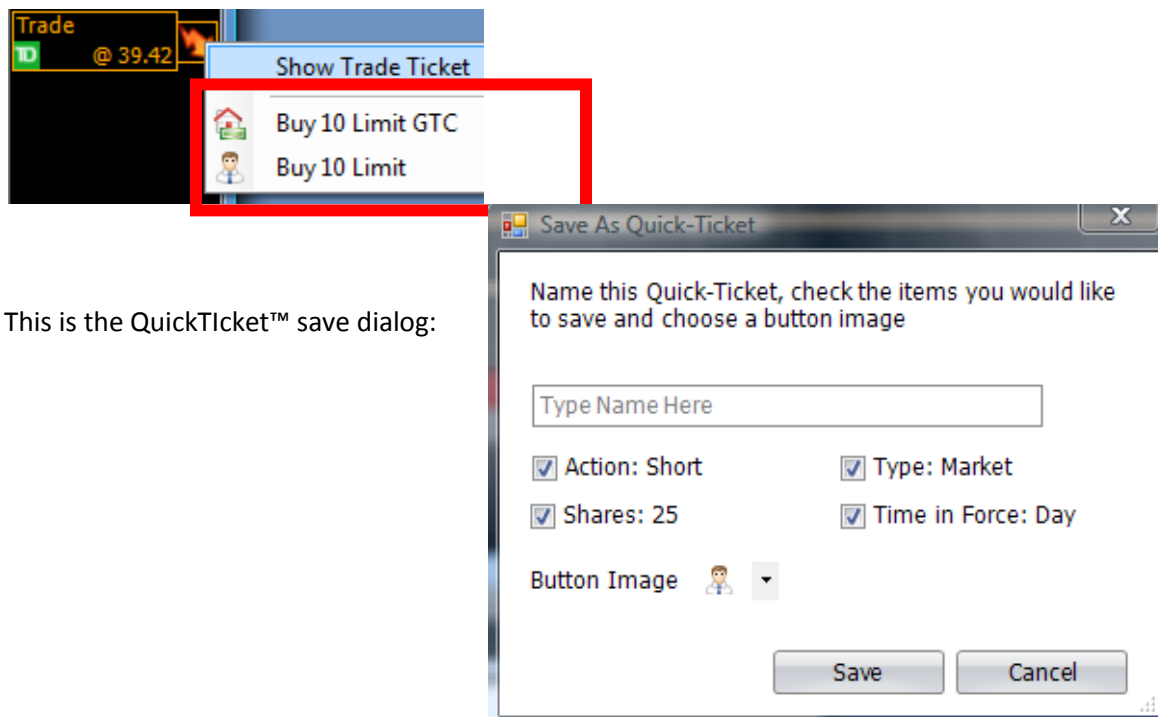
To create your own pre-configured trade tickets

You may have a typical trade size and order configuration you like to use. Rather than manually filling out your order ticket every time, you can save the defaults to a QuickTicket™ and give it a name and assign it an icon.

While viewing any order ticket, you can save the current values to a QuickTicket™ by clicking on the diskette icon. Once it is saved, it will show up on the order ticket toolbar. When you click on a QuickTicket™ toolbar icon, your order ticket will automatically be filled out with the saved values.



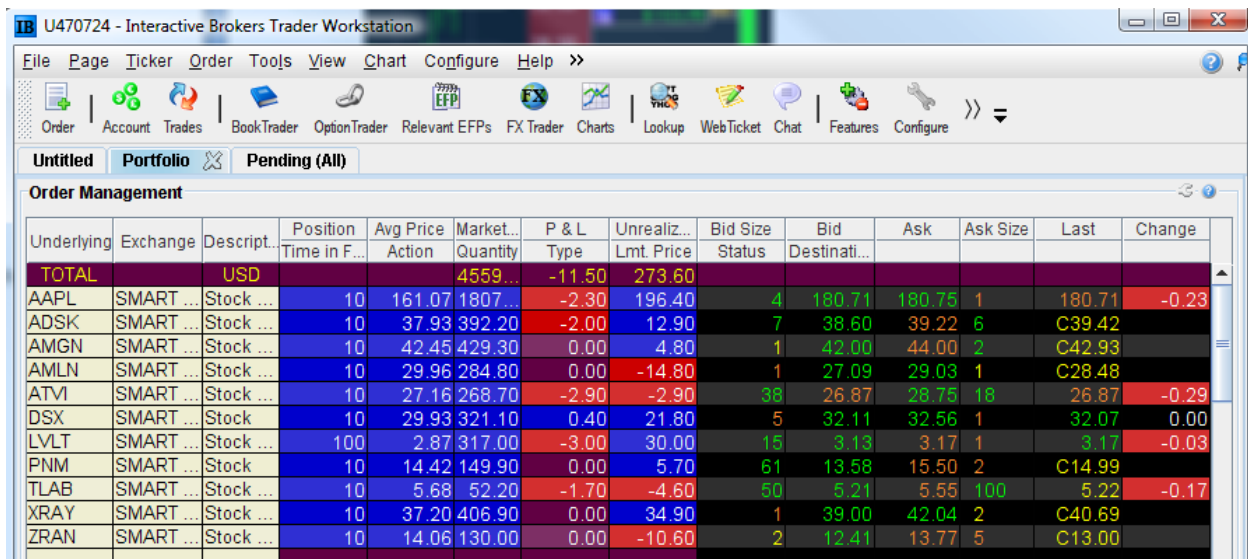
QuickTickets™ also show up when you click the  trade button on a slider making your default trade configurations only one click away from your chart.



This is the QuickTicket™ save dialog:

New Integration with Interactive Brokers' Trader Workstation

Interactive Brokers (IB) is very popular among active traders due to its strong trade executions and cheap commissions. Its Java built Trader Workstation (TWS) provides a spreadsheet style interface to place trades, monitor positions, track bid/ask activity, and do a ton more.

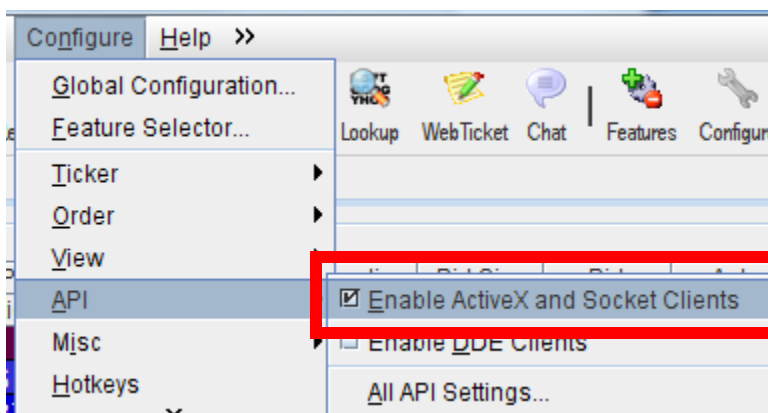


Underlying	Exchange	Descript...	Position Time in F...	Avg Price Action	Market... Quantity	P & L Type	Unrealiz... Lmt. Price	Bid Size Status	Bid Destinati...	Ask	Ask Size	Last	Change
TOTAL		USD			4559...	-11.50	273.60						
AAPL	SMART	Stock ...	10	161.07	1807...	-2.30	196.40	4	180.71	180.75	1	180.71	-0.23
ADSK	SMART	Stock ...	10	37.93	392.20	-2.00	12.90	7	38.60	39.22	6	C39.42	
AMGN	SMART	Stock ...	10	42.45	429.30	0.00	4.80	1	42.00	44.00	2	C42.93	
AMLN	SMART	Stock ...	10	29.96	284.80	0.00	-14.80	1	27.09	29.03	1	C28.48	
ATVI	SMART	Stock ...	10	27.16	268.70	-2.90	-2.90	38	26.87	28.75	18	26.87	-0.29
DSX	SMART	Stock ...	10	29.93	321.10	0.40	21.80	5	32.11	32.56	1	32.07	0.00
LVL	SMART	Stock ...	100	2.87	317.00	-3.00	30.00	15	3.13	3.17	1	3.17	-0.03
PNM	SMART	Stock ...	10	14.42	149.90	0.00	5.70	61	13.58	15.50	2	C14.99	
TLAB	SMART	Stock ...	10	5.68	52.20	-1.70	-4.60	50	5.21	5.55	100	5.22	-0.17
XRAY	SMART	Stock ...	10	37.20	406.90	0.00	34.90	1	39.00	42.04	2	C40.69	
ZRAN	SMART	Stock ...	10	14.06	130.00	0.00	-10.60	2	12.41	13.77	5	C13.00	

Blocks Trader integrates directly with TWS. If you place a trade from a Blocks chart, it will show up in the TWS. If you place a trade in TWS, it will show up in Blocks Trader charts and position watchlists. This makes it convenient and seamless to operate between the two programs. Even if Blocks is closed when you work through TWS, everything will show in Blocks the next time you run it.

One time setup between Blocks and IB's Trader Workstation (TWS)

Before Blocks can integrate with IB, you must configure the TWS to work with third party products. This takes about 2 seconds. Select the **Configure** pulldown menu. Then select **API**. Then check the box for **Enable ActiveX and Socket Clients**.

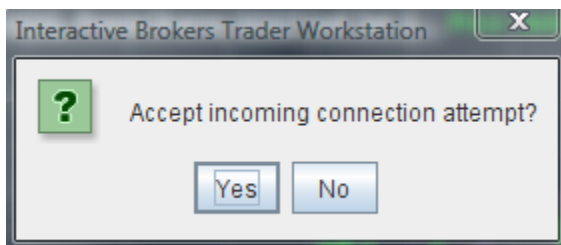


To connect Blocks to TWS

First you must run TWS and log in to IB the standard way. You can run the browser version or the desktop version of TWS – either will work. Once TWS is logged in, go to the Brokers tab in Blocks, press the IB button and select Connect to TWS.



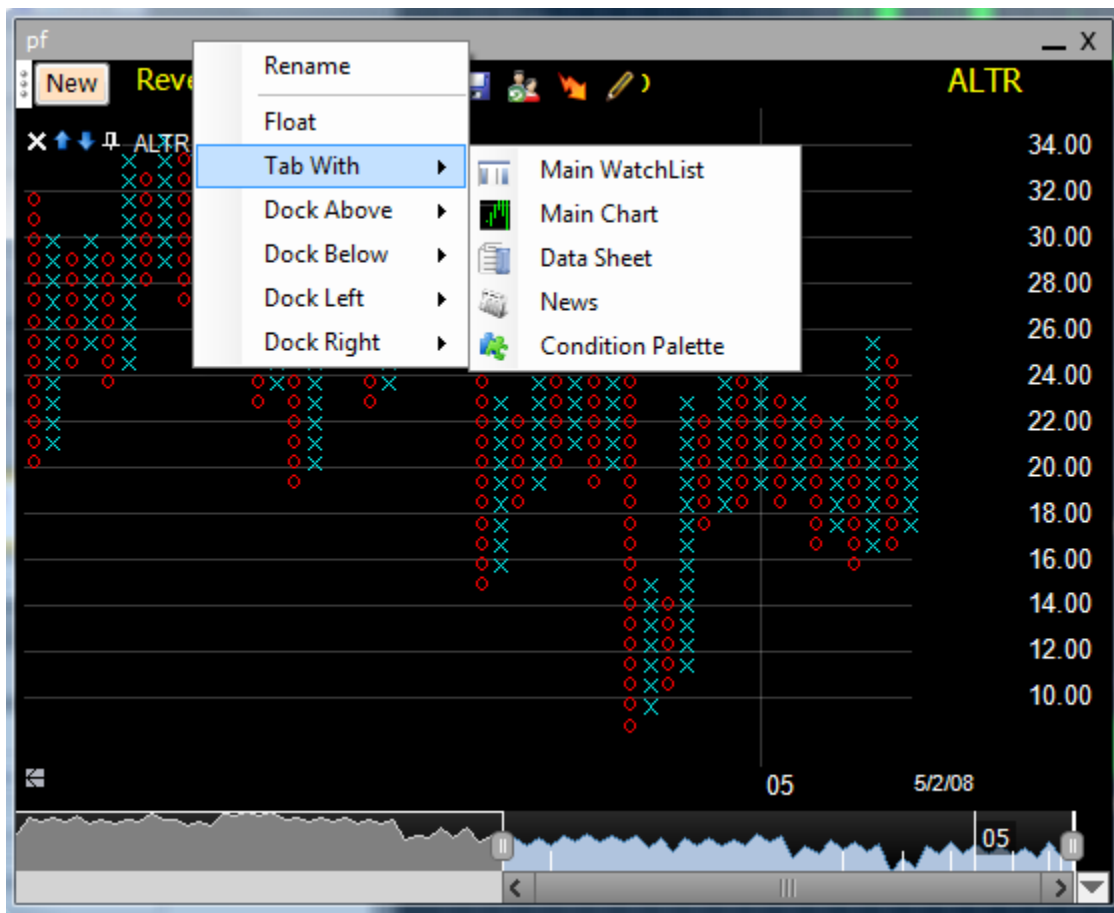
After you click *Connect to TWS*, you will be asked to accept the incoming connection attempt. Select *Yes* and Blocks & TWS are hooked together.



New Window Layout Options

Right click on a window header (this could be a chart, watchlist, news, etc.)

You'll get a menu to help you place the window anywhere you'd like within your layout. You can tab it with another window or place it above/below/left/right of any other window.



To reorder tabbed windows

You can now reorder windows which are tabbed together by dragging a tab to the left or right.

New BackScanner® Now Available in Pre-Release

The initial pre-release of BackScanner is now available to the following users.

- Anybody who attends a live Worden training event after May 5, 2008
- Anybody who has had uninterrupted Blocks service since version 2.0

There will be no charge during the pre-release period. If you meet any of the above qualifications, you should automatically see the BackScanner button appear on your ribbon.



If you think you meet these requirements and you don't see the BackScanner® button on your ribbon, call 1-800-776-4940. More documentation will be out shortly. In the meantime, you are on your own. But it's not too hard to figure out. Just start dragging conditions from your palette into the rules page of BackScanner. If you are not the exploring type, the new docs will be out soon.

The price of BackScanner will be determined after the pre-release period is over. Qualified Blocks 2.0 users will receive a special grandfather package.

Here are some sneak-peek screenshots from the new BackScanner.

This is the window you drag your conditions into to set up your rules.



You can drag *Plots | Trade Signals* from BackScanner® onto any chart to see how your entry and exit rules perform visually.



BackScanning an entire watchlist is easy. Just press the update button. This is a list of every trade generated for the entire active watchlist.

WatchList: Active WatchList					
Update		Last Update 1:45 PM			
All Trades	Sort	Enter Date	<input checked="" type="checkbox"/> Descending		
Symbol	Trade % Change Length	Enter	Exit	Draw Down Best Exit Worst Exit	
VMED	Long +13.3% 21 days	4/18/08 \$12.36 ■	5/9/08 \$14.01 Open	-11.27%	+15.86% +11.81%
CDNS	Long +3.6% 91 days	2/8/08 \$10.62 ■	5/9/08 \$11.00 Open	-8.79%	+5.74% +3.30%
CHRW	Long +16.5% 91 days	2/8/08 \$56.47 ■	5/9/08 \$65.77 Open	-9.86%	+17.37% +15.51%
JNPR	Long +8.6% 98 days	2/1/08 \$26.21 ■	5/9/08 \$28.47 Open	-13.36%	+10.95% +8.16%
PETM	Long +11.4% 98 days	2/1/08 \$20.71 ■	5/9/08 \$23.08 Open	-16.67%	+12.89% +9.61%
MSFT	Long -11.3% 98 days	2/1/08 \$33.02 ■	5/9/08 \$29.30 Open	-9.18%	-7.27% -11.45%
CELG	Long +29.5%	12/21/07 \$50.39	5/9/08 \$65.26	-19.13%	+30.78%

This screenshot summarizes the performance of your test for an entire watchlist.



This screenshot breaks down the performance of your test by each individual symbol in a watchlist. This makes it possible to find systems which might work well for specific stocks even if they don't work well in general.

